

LUNCH MENU SELECTION

HOW TO SELECT A MEAL

1. Collect a plate.
2. Select your salad and/or hot accompaniments (see "BUFFET" below).
3. Weigh your plate.
4. Select your hot meat (see "HOT MEAT SELECTION" below).
5. Proceed to the cashiers and pay.

HOT MEAT SELECTION

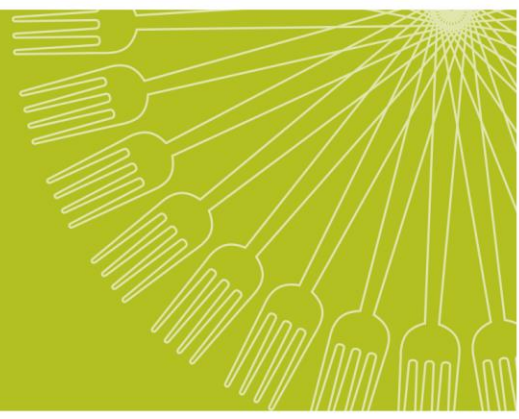
Pie (Ostrich or Chicken)	R45.00
Roast Chicken	R69.50
Beef (Roast Beef, Brisket etc.)	R90.50
Lamb	R99.50

BUFFET

Assortment of Hot Vegetable Dishes	R24.50 /100g
Assorted Salads	R24.50 /100g
Fresh Fruit	R11.50 each

CHEF'S SPECIAL

Chef's Special dish of the day (See blackboard for details)	R82.50
--	--------



PIZZA SLICE

Dassie (Margherita)	R40.00
Fynbos (Vegetarian)	R48.00
Lion's Head (Salami)	R48.00
Robben Island (BBQ Chicken)	R48.00
Breakfast (Sausage, Baked beans, Fried egg)	R48.00

COFFEE AND CAKE BAR

A range of fresh Homemade cakes and muffins	from	R22.50
Hot Beverages (Selection of Tea, Coffee and Speciality Coffee)	from	R18.50

**Place all Coffee and Cake orders at the “Pay Point”
Receive your buzzer and take a seat.**

**When your buzzer lights up, collect your order at the
“Coffee Bar” collection point.**